



**GIG HARBOR  
YACHT CLUB**



**TOTEM  
YACHT CLUB**

**2024 GHYC INVITATIONAL and TOTEM YC JACK HYDE MEMORIAL  
FINAL – rev 3\_2024/03/11**

Rally Date: March 23, 2024

Skippers, Mates, and Crews:

On behalf of Gig Harbor Yacht Club Bridge along with the Totem Yacht Club Bridge, we are pleased to invite you to the **Gig Harbor Invitational and Totem YC Jack Hyde Memorial Predicted Navigation Rally's (2-FER) and Social Events**, to be held on the weekend of March 22 & 23, 2024. This race has been sanctioned by the International Power Boat Association and the United States Coast Guard.

A total of 500ft of linear moorage has been reserved at the south end of the Foss Seaport dock for Friday night. Moorage is \$1/ft. and power is \$5 for 30A or \$7 for 50A at the south end of Seaport Museum dock at the entrance to Thea Foss waterway in Tacoma for Friday March 22. There are self-register envelopes at top of ramp; drop in box at NE corner of building. **(Contestant Paid) for Friday March 22.** Contestants do not need to make individual reservations.

Moorage will be available at Arabella's Landing in Gig Harbor **(Contestant Paid) for Saturday March 23.**

**VERY IMPORTANT ARABELLA'S MOORAGE RESERVATION REQUIREMENT**

Arabella's Landing requires each skipper requesting moorage to go to [www.arabellaslanding.com](http://www.arabellaslanding.com), and make reservations online. **RESERVATIONS MUST BE MADE (ONLINE) NO LATER THAN MARCH 18, 2024.** Using the code [ghycmar2024] per the instructions in the Flyer (attached), you will be able to make your reservation. You will need to pay for Saturday night moorage. Moorage at Arabella's is \$1.50/ft. (Slip Size).

Since we will be arriving Gig Harbor immediately following the contest, **Please call Arabella's upon arrival (253-851-1793) to obtain final slip assignment (DO NOT ATTEMPT ENTERING MARINA WITHOUT CALLING THE MARINA).**

Additional moorage is available at the Gig Harbor City Dock on a first come, first serve basis, with shore power and water available for approximately \$1.00/foot.

NOTE: The power pedestals on both Arabella Dock and the City Dock are compliant with the new electrical code.

Registration will be aboard Fidalgo (at the Seaport marina) Friday night and Saturday morning. Official Registration begins at 0800 on March 23. Saturday, log submission should be submitted to Jim Anderson before 1000. Jim will be aboard Fidalgo at the Seaport marina. If possible, I would appreciate the Predicted log and contest log sent via email or in person on Friday to get a jump start on entries. A photo or file will suffice. My email is [fidalgo47jd@gmail.com](mailto:fidalgo47jd@gmail.com).

Following completion of the Rally, turn in your completed contest log aboard Fidalgo at Arabella's. A social hour, dinner and awards presentations will be held on Saturday evening at Gig Harbor Yacht Club beginning at 1730; shuttle service will be available between Arabella's and GHYC. Please register by March 15 for planning purposes and post-race activities.

**2024 GHYC INVITATIONAL and TOTEM YC JACK HYDE\_FINAL**  
**Combined Predicted Navigation Rally's**  
**March 23, 2024**  
**Registration Form:**

Boat Name: \_\_\_\_\_ LOA: \_\_\_\_\_  
Skipper: \_\_\_\_\_ IPBA#: \_\_\_\_\_  
Address: \_\_\_\_\_ NACA#: \_\_\_\_\_  
City: \_\_\_\_\_ Zip Code \_\_\_\_\_  
Email: \_\_\_\_\_ Club \_\_\_\_\_  
Phone #: \_\_\_\_\_  
Navigator: \_\_\_\_\_

Friday Social and casual dinner (\$10.00pp, BYOB) # Attending: \_\_\_\_\_

Saturday Awards Dinner (\$20.00 pp & No-Host Bar) # Attending: \_\_\_\_\_

GHYC Invitational Registration Fee \$20.00 per contestant.

Jack Hyde Registration Fee \$20.00 per contestant.

**Preferred method for Registration is via the IPBA Website ASAP**  
**(<https://ipba12.wildapricot.org/>). Make payments at "Check-In" on the 23<sup>rd</sup>.**

You may also submit your registration via snail mail to arrive no later than March 15, 2024 along with your entry fees of \$20 (for each Rally). Friday dinner fee of \$10.00/pp and Saturday dinner fee of \$20pp for contestants/crews. Friday evening meal fee may be collected by Totem Friday evening.

Or, email this form to [fidalgo47jd@gmail.com](mailto:fidalgo47jd@gmail.com) no later than March 15 and pay at check-in. Make checks payable to Jim Anderson.

Please make checks payable to Jim Anderson.

Jim Anderson  
GHYC Regatta Power  
253-312-2967

1917 26<sup>th</sup> Street Ct NW  
Gig Harbor, WA 98335  
[fidalgo47jd@gmail.com](mailto:fidalgo47jd@gmail.com)

If sending by Snail Mail - address to:

Jim Anderson  
1917 26<sup>th</sup> Street Ct NW  
Gig Harbor, WA 98335

Questions? Contact

Jim Anderson (253) 312-2967 or [fidalgo47jd@gmail.com](mailto:fidalgo47jd@gmail.com)

Matt Ales (434) 942-5398 or [males.ohe@gmail.com](mailto:males.ohe@gmail.com)

Bob Watson (253) 209-6452 [robertwatson6@comcast.net](mailto:robertwatson6@comcast.net)

**2024 GHYC INVITATIONAL and TOTEM YC JACK HYDE\_ FINAL**  
**Combined Predicted Navigation Rally's**  
**March 23, 2023**  
**Schedule of Events**

**Friday, March 15**

Last day a boat may register.

**Friday, March 22**

1300-

Arrival Seaport Museum Dock. For moorage call Totem YC on VHF 68

1300-1700

Early Registration aboard Fidalgo

Enjoy Foss Seaport Museum or Foss Waterway Esplanade

1800

Friday evening Social and Casual Meal (BYOB) in the Flagship Maritime Training Center (walking distance)

**Saturday, March 23**

0800-1000

Coffee and Pastries on Dock

0800-0945

Registration and Log Turn-in aboard Fidalgo

1100-1400

GHYC Inv/Totem YC Jack Hyde Navigation Contest

1430-1530

Contest Log turn in aboard Fidalgo at Arabella's

1715

Shuttle Service to Gig Harbor Yacht Club

1730-1830

Pre-dinner Social Hour at GHYC (no-host bar will be open)

1830-

Dinner at GHYC followed by Awards/Race Results.  
Observers invited at their own expense

Following Dinner

Shuttle Service to Arabella's.

**Sunday, March 24**

We hope you had a great time and have a safe trip home.

**2024 GHYC INVITATIONAL and TOTEM YC JACK HYDE\_ FINAL**  
**Combined Predicted Navigation Rally's**  
**03/23/2024**

**SPECIAL RULES**

1. Introduction: This contest shall be conducted under the Standard Rules of the International Power Boat Association and/or as modified by these Special Rules. The IPBA Standard Rules are available on the IPBA website at [www.ipbalogracing.org](http://www.ipbalogracing.org) .

IPBA rules require that contestants operate in a safe manner in compliance with all Pilot Rules, Rules of the Road and Navigational Law, including local laws enacted by proper authority applicable to the Contestant's cruiser in the area where the contestant is operating (Rule No. 8.I). Failure to comply with the Rules of the Road will result in a 1% penalty or disqualification (Rule No.14.A).

Due to the federal government's elevated rules on the national risk of terrorism, special restrictions governing marine traffic are in effect. This effects the separation that must be maintained between pleasure vessels and certain military and commercial ships. These restrictions apply to Washington State Ferries as well.

Contestants must comply with the Coast Guard's "Puget Sound Orca Whale Avoidance rules: (1) Cause a vessel or other object to approach, in any manner, within two hundred yards of a southern resident orca whale. (2) Position a vessel to be in the path of a southern resident orca whale at any point located within four hundred yards of the whale. This includes intercepting a southern resident orca whale by positioning a vessel so that the prevailing wind or water current carries the vessel into the path of the whale at any point located within four hundred yards of the whale, (3) Fail to disengage the transmission of a vessel that is within two hundred yards of a southern resident orca whale; or (4) Feed a southern resident orca whale.

2. Observers - Contestants are asked to supply their own observer for this event due to logistics concerns. Observers are honored guests on your boat; please plan to provide them with lunch. Please make them feel welcome and take the time to let them know the results of your performance.

3. Logs: Predicted Logs and Contest Logs shall be completed in ink and shall be submitted to the Contest Committee (**aboard Fidalgo**), between **(0800-1000)** on the day of the contest. The completed and signed Contest Log shall be returned to the Contest Committee in the (**aboard Fidalgo**) prior to **(1530)** on contest day. It is recommended that the total error in seconds and handicapped percentage of error be calculated and entered on your log prior to turning in your Contest Log. The Contest Committee will accept Contest Logs preferably when submitted with the Contestant present however email/text submission will work as well.

4. IPBA Numbers: IPBA numbers must be displayed port, starboard and astern and be visible.

5. Time: Time shall be Pacific Daylight Time (PDT). The official timepiece will be located at the Registration Desk. This time will be set to GPS time.

6. Stop Watches: A stop watch will be allowed only for time allowances and verification of official time made by the observer in accordance with Rule No. 8.O. The stopwatch shall be cleared and stopped when its use is no longer permitted.

7. Throttles: Throttles may be adjusted during the contest to vary engine RPM from the basic RPM shown on the log by plus 20 percent (20%) or minus as much as needed (boat must remain in forward gear).

8. Flat Water Speed: Flat Water Speed is the speed of your boat at the basic Cruise RPM shown on your Contest Log without consideration for wind or current.

9. Handicap: The current IPBA handicap as set forth in the Standard Rule Book shall be used to determine the net percentage of error. For predicted speeds of less than 7.0 knots, the handicap for

7.0 knots shall be used. For predicted speeds of more than 23.0 knots, the handicap for 23.0 knots shall be used.

10. Radios: VHF Channel 16 shall be monitored during the contest. Prior to contest start, contestants are requested to utilize VHF Channel 9 for pre-start communications. Immediately prior to starting, contestants must switch to Channel 16 for the duration of the contest.

11. Navigation Aids:

**DIV-1 Tach & Compass (Traditional Class)**: Radar MAY NOT be used for contest navigational purposes, but MAY be used at any time the skipper deems it necessary for safety purposes (See IPBA Rule No. 9 – Safety Rule). Chart-plotters and electronic charts may be used to replace paper charts as long as the chartplotter or computer is not connected to GPS and does NOT display speed, time or position information (SOG, COG, Time of Day, tracking or latitude/longitude). NOTE – Be sure that event marks (such as pressing the F5 key on Coastal Explorer and NobleTec navigation programs) do not display Time of Day. If electronic charting is used, a large scale printout of the course layout must be made available to the observer. Autopilots and depth sounders may be used as long as they do not use active GPS signals for waypoint arrival or for steering the boat. Electronic ranging devices may not be used. Cell phones may not be used except by Observers to record times. An electronic data logger may be used to record your track and supplied to the judges if needed. A skipper may request time of day from the observer after each Checkpoint if so desired.

**DIV-2 OPEN CLASS: Entries using all electronics**: The Div-2 Open Class allows entrants to use all electronics available to them except for cell phones and time of day (you must cover or tape all time of day displays). Cell phones may not be used except by Observers to record times. Useable devices include radar, GPS chartplotters, auto pilots, ranging devices, etc. A skipper may request time of day from the observer after each Checkpoint if so desired.

12. Chart: The recommended chart for this contest is N.O.A.A. Chart 18448. The Official Mileage for the Totem YC Jack Hyde is (**12.4** [12.04 + 0.3]) NM and the GHYC Invitational is (**13.5** [3.106 + 0.3]) NM, which cannot be exceeded. The Official Mileage for the, which cannot be exceeded.

13. Finish Classes: There are three (3) finish time brackets in this contest for DIV-1 Tach/Compass and one (1) finish time bracket in this contest for DIV-2 Open Class

<u>Finish Times DIV 1</u>	<u>Flat Water Cruise Speed (knots)</u>	<u>Finish Time</u>
1	Max 8.50	1345-1355
2	8.51 to 9.50 inclusive	1355-1405
3	9.51 and above	1405-1415
<u>Finish Times DIV 2</u>	<u>Flat Water Cruise Speed (knots)</u>	<u>Finish Time</u>
	All Speeds	1415-1425

14. Awards: Plaques for first place overall in each Division (GHYC Inv. & Totem YC Jack Hyde). Other winners will receive appropriate recognition. Awards will be presented following the Saturday dinner. Perpetual Trophies include the first place overall **Award Trophy** for each contest. The method by which each Perpetual Trophy will be decided will depend on the number of participants in each division and may be awarded jointly to the Best Overall in each Division. There will also be a plaque for the Best Novice in each division. Rally results may be viewed at the IPBA web site:

<http://www.ipbalogracing.org>.

**2024 GHYC INVITATIONAL and TOTEM YC JACK HYDE\_FINAL**  
**Combined Predicted Navigation Rally's**

**Route Description (Geographical Mark Details)**

**Notes:**

1. Lat/Lon's for lights/buoys, per 2023 Light List V6
2. Lat/Lon's for various geographical marks based on "Bing Aerial Photos"

<b>ID</b>	<b>Call the Mark when:</b>	<b>Then proceed AT or ON:</b>	<b>Positions Referenced</b>	
<b>STDG START</b>	Grainery Storage S end Port 300 yd. <b>[START JACK HYDE]</b>	<b>SLOW SPEED</b> =/ <b>&lt; 7.0 KTS</b> <b>COG 325T</b>	<b>Grainery Lid (roof)</b> <b>NE corner</b>	<b>47.2648° N</b> <b>122.4430° W</b>
0.1	Range of East side of Stadium HS to PORT		Range West side	
0.2	Naval Supply Ship Naval Supply Ship East Mrg Platform ABM PORT 300 yds		Mrg Platform Bollard	47.2730° N 122.4544° W
<b>CP-1</b>	Jack Hyde Park Sundial ABM PORT 300 yds		<b>Sundial Structure</b>	<b>47.2756° N</b> <b>122.4624° W</b>
1.1	Katie Downs Spire ABM PORT 300 yds		Spire	47.2815° N 122.4787° W
1.2	Ruston Way Marine Park Public Pier NE End ABM PORT 300 yds		NE end of pier	47.2871° N 122.4874° W
1.3	MV Pt Ruston Stern ABM PORT 300 yds. Begin TR-1	<b>RESUME CRUISE SPEED</b> TR-1 COG 50T for 0.5 nm	Stern of vessel	47.2963° N 122.4985° W
1.4	TR-1 END	COG 80T		
<b>CP 2</b>	Browns Pt Lighthouse ABM STB	COG 35T	<b>Lighthouse</b>	<b>As Charted</b>
2.1	Dash Point Pier End ABM STB. Begin TR-2	COG 350 T for 1.0 nm		47.3203° N 122.4267° W
2.2	TR-2 END.	COG 255T		
2.3	Neill Point YURT ABM STB	<b>SLOW SPEED</b> =/ <b>&lt; 7.0 KTS</b>		47.3312° N 122.4940° W
<b>CP-3</b>	Tahlequah Ferry Terminal Lt "A" ABM STB 300 yds.		<b>Light</b>	<b>As Charted</b>
3.1	Pt Dalco House W end ABM STB 300 yd.	COG 306T	West end of house	47.3336° N 122.5178° W
3.2	S end Beach House N of Pt Dalco ABM STB.	<b>RESUME CRUISE SPEED</b> COG 341T	South end of house	47.3356° N 122.5212° W
<b>CP-4</b>	Extension Spring Beach Road to STB <b>[END JACK HYDE] [START GHYC INV]</b>		<b>Shoreline end of road</b>	<b>47.3491° N</b> <b>122.5278° W</b>

4.1	Camp Sealh Pier Platform NW corner ABM STB 300 yd.	COG 55T	NW corner of pier platform	47.3670° N 122.5222° W
4.2	Row of Piling NE of NE of Camp Stealth Pier to STB		Offshore piling as shown on Bing Aerial Photos	47.3707° N 122.5166° W
<b>CP-5</b>	Colvos Light 5" ABM STB 200 yd"		<b>Light</b>	<b>As Charted</b>
5.1	Lizabula Piling ABM STB 200 yds		Piling as shown on Bing Aerial Photos	47.4053° N 122.5225° W
5.2	Anchored Platform at Green Valley Creek to STB 300 yds.	COG 4T	Anchored Platform	47.4147° N 122.5142° W
5.3	Range of old Pier Piling north of Robinhood Creek Vashon Isl. to STB	TR-3 COG 266T for 0.5 nm.	End of Pier as shown on Bing Aerial Photos	47.4361° N 122.5129° W
5.4	TR-3 END			
<b>CP-6</b>	Colvos Light "4" ABM STB 100 yds.	<b>SLOW SPEED =/ 7.0 KTS COG 206 T</b>	<b>Light</b>	<b>As Charted</b>
6.1	Ollala Post Office SE corner ABM STB 400 yds	RESUME CRUISE SPEED COG 192T		47.4216° N 122.5416° W
6.2	Old Manson Pier End ABM STB 300 yd		End of Pier as shown on Bing Aerial Photos	47.3888° N 122.5503° W
<b>CP-7</b>	<b>Colvos Lt 6" ABM STB 200 yds.</b>	<b>COG 203T</b>	<b>Light</b>	<b>As Charted</b>
7.1	Extension SeaCliff Pier STB 240 yds (extension 104T)		End of Pier	47.3550° N 122.5535° W
7.2	Sunrise Beach Lone Bch Home ABM STB 200 yd		Center of house	47.3473° N 122.5567° W
7.3	Green Roof Bch Cabin north end ABM STB 250 yds		NE end of cabin	47.3342° N 122.5677° W
<b>CP-8</b>	Northmost Bch Cabin GH Shoreline north end ABM STB 250 yds. <b>[END GHYC INV]</b>		<b>NE end of cabin</b>	<b>47.3274° N 122.5717° W</b>

**Upon reaching the finish, proceed back to Gig Harbor. NO WAKE SPEED INSIDE THE HARBOR.**



# 2024 GHYC INVITATIONAL and TOTEM YC JACK HYDE\_FINAL

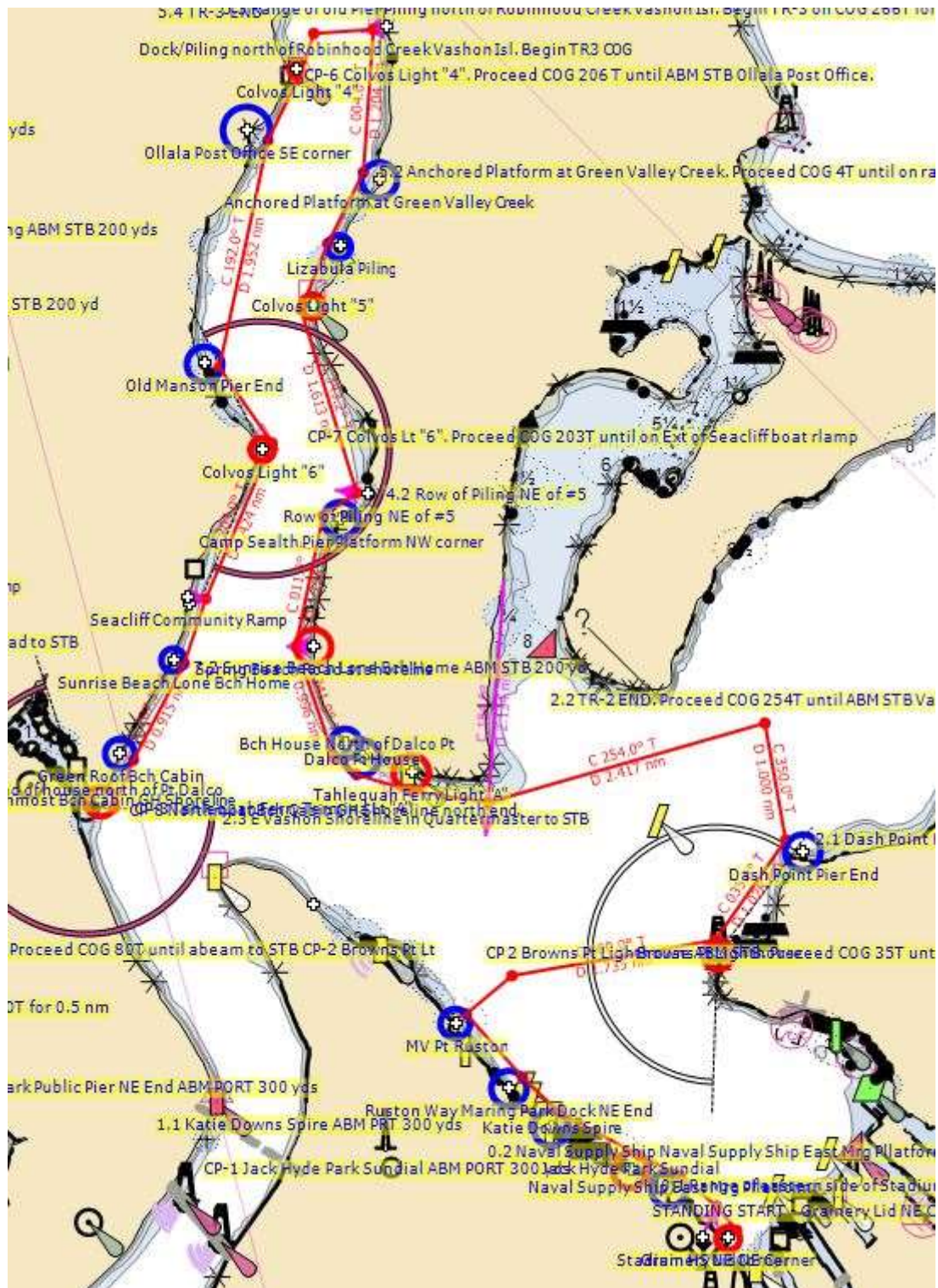
## Combined Predicted Navigation Rally's

### Route Waypoint Details

Name	Bearing (True)	Bearing (Mag)	Distance	Total Distance	Degrees Latitude	Degrees Longitude
START - Grainery Storage S end					47.266	122.440
0.1 Range of East side of Stadium HS	325.0	309.8	0.333	0.333	47.271	122.445
0.2 Naval Supply Ship Naval Supply Ship East Mrg Platform	309.5	294.3	0.393	0.725	47.275	122.452
CP-1 Jack Hyde Park Sundial	296.6	281.4	0.392	1.117	47.278	122.461
1.1 Katie Downs Spire	298.1	282.9	0.750	1.867	47.284	122.477
1.2 Ruston Way Marine Park Public Pier NE End	314.1	298.9	0.447	2.314	47.289	122.485
1.3 MV Pt Ruston Stern	318.6	303.4	0.697	3.011	47.298	122.496
1.4 TR-1 END.	50.0	34.8	0.500	3.512	47.303	122.487
CP 2 Browns Pt Lighthouse	80.0	64.8	1.735	5.247	47.308	122.445
2.1 Dash Point Pier End.	35.0	19.8	1.026	6.273	47.322	122.430
2.2 TR-2 END.	350.0	334.8	1.000	7.272	47.338	122.435
2.3 Neill Point YURT ABM STB	255.0	239.8	2.444	9.716	47.328	122.493
CP-3 Tahlequah Ferry Terminal Lt "A"	276.0	260.9	0.626	10.342	47.329	122.508
3.1 Pt Dalco House W end	286.9	271.7	0.463	10.805	47.331	122.519
3.2 S end Beach House N of Pt Dalco	306.0	290.8	0.231	11.036	47.333	122.523
CP-4 Extension Spring Beach Road	341.0	325.8	0.997	12.032	47.349	122.531
4.1 Camp Sealth Pier Platform NW corner	11.8	356.6	1.125	13.157	47.368	122.526
4.2 Row of Piling NE of NE of Camp Stealth Pier	55.0	39.8	0.343	13.500	47.371	122.519
CP-5 Colvos Light "5"	343.2	328.0	1.613	15.113	47.397	122.530
5.1 Lizabula Piling	22.2	7.0	0.598	15.710	47.406	122.525
5.2 Anchored Platform at Green Valley Creek.	26.4	11.2	0.669	16.379	47.416	122.517
5.3 Range of old Pier Piling north of Robinhood Creek Vashon Isl.	4.0	348.8	1.204	17.584	47.436	122.515
5.4 TR-3 END	266.0	250.8	0.500	18.084	47.435	122.528
CP-6 Colvos Light "4"	197.9	182.7	0.342	18.426	47.430	122.530
6.1 Ollala Post Office SE corner	206.0	190.8	0.640	19.066	47.420	122.537
6.2 Old Manson Pier End	192.0	176.8	1.952	21.017	47.388	122.547
CP-7 Colvos Lt 6".	145.3	130.1	0.774	21.791	47.378	122.536
7.1 Ext SeaCliff Pier	202.7	187.5	1.509	23.300	47.355	122.551
7.2 Sunrise Beach Lone Bch Home	198.3	183.1	0.492	23.792	47.347	122.554
7.3 Green Roof Bch Cabin north end	207.8	192.6	0.922	24.714	47.333	122.565
CP-8 Northmost Bch Cabin GH Shoreline north end.	201.7	186.5	0.424	25.138	47.327	122.569



# 2024 GHYC INVITATIONAL and TOTEM YC JACK HYDE\_FINAL Combined Predicted Navigation Rally's CHARTLET



# ARABELLA'S LANDING INDIVIDUAL BOAT RESERVATION PROCEDURE

Thank you for your reservation at Arabella's Landing for the upcoming event planned for the Gig Harbor Yacht Club from Saturday, March 23, 2024 until Sunday, March 24, 2024.

This email contains important information for you regarding how club participants reserve their slips online and how you can monitor who has made a reservation.

## 1. How your club participants make their slip reservations

- Marina slips are now held for your club participants to make their individual reservations.
- Please provide the following information to your participants to reserve a slip held for this club event:

--Go to Arabella's Landing Marina website - [www.arabellaslanding.com](http://www.arabellaslanding.com)

--Enter this Event Code for Clubs Only after selecting the Book Guest Moorage

button: **ghycmar2024**

--Follow the steps to make a slip reservation and provide payment for the moorage

- Participants will make their individual reservations directly on our Marina's website by entering the club's event code to view slips held, but not yet reserved by another participant.
- These slips will be held for the club until 5 days before the scheduled arrival date on Saturday, March 23, 2024, after which they become available to the general public. Club participants may continue to reserve slips without using the event code, if slips are still available.
- When your club participants make their reservations, they will receive a confirmation email noting:

--Payment: **100% of moorage cost is due at time of booking**

--Cancellations: **Must cancel by the date in the slip confirmation email to**

**receive a refund for the entirety of the reservation period, less \$10.00 processing fee**

--Additional information regarding: **Door codes for Marina's main gate, restrooms and showers, and WiFi access details**

**Note: Use this information on arrival day to assist and ensure all club participants moor in their designated slips.**

## 3. How to access Marina main gate, restrooms & showers and WiFi network

**To open the Marina's main gate, restrooms and showers, you enter a 4-digit code on a keypad. The same code is used for all. Please make a note of the relevant code for the dates of your club event.**

**2024: Jan 5401 Feb 2302 Mar 3203 Apr 1304 May 7605 June 9106 July 1207 Aug 6408 Sept xxxx Oct xxxx Nov xxxx Dec xxxx**

**2025: Jan (will be updated later this year)**

**To access the Marina's guest WiFi, use the following information: Network: Arabella's-Guest Moorage Password: brguest2**

**Dock Water Supply: Winter Message - From November 1, 2023 to March 15, 2024, the water supply to slips will be off this entire period. Nearby, potable water is available year-round from the Gig Harbor City public dock ( Maritime Pier), near the Tides Tavern as you enter the harbor.**

**Thank you, Monique  
Arabella's Landing, General Manager**

**Arabella's Landing**

**Tel: 253.851.1793 Email: [Info@Arabellaslanding.com](mailto:Info@Arabellaslanding.com) Web: [www.arabellaslanding.com](http://www.arabellaslanding.com)**