

2021 ICR and Century 21 Navigation Contest  
September 11, 2021  
Chart and/or Geographical MARK Photos

**START – NE corner of the Tennis Court (north end Harstine Isl)**

**47° 17.910'N;  
122° 50.895'W**



**START – NE  
corner Tennis  
Court**

**Leg 1 – Harstine Isl beach cabin**

**47° 16.244'N;  
122° 51.841'W**

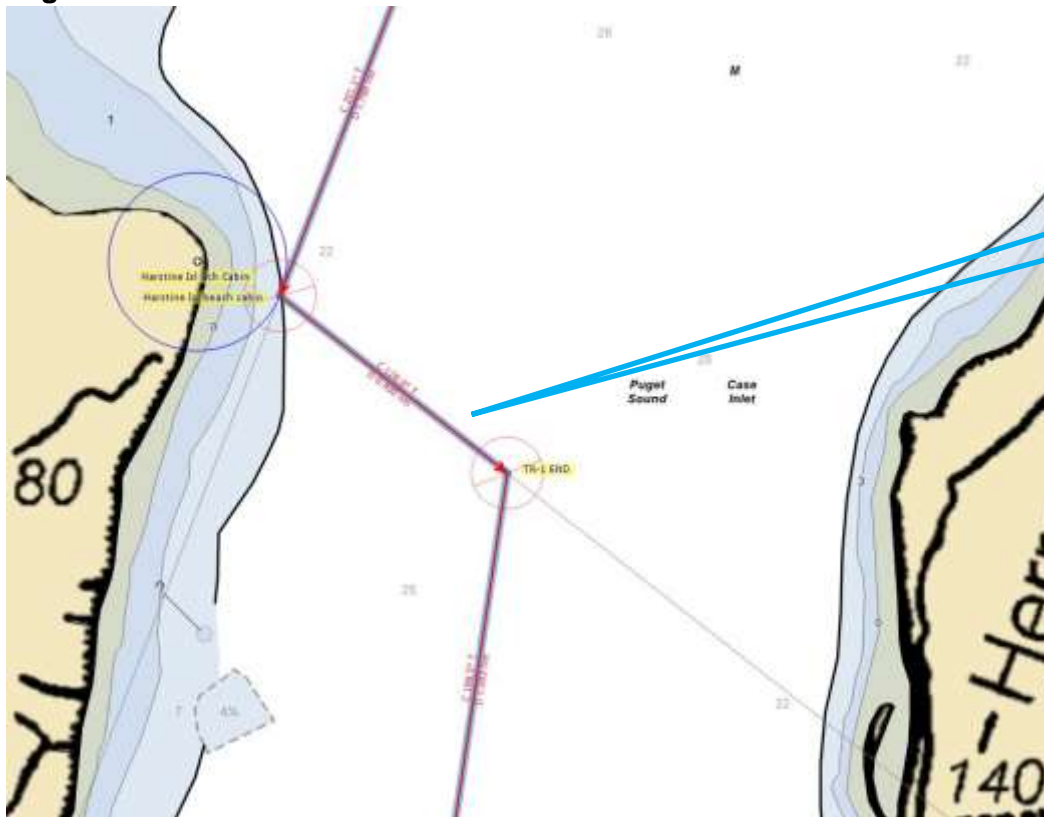


**NE corner Harstine  
Isl. beach cabin  
ridgeline.**

**(Cabin at Harstine Isl  
point, west of Herron  
Isl.)**

**2021 ICR and Century 21 Navigation Contest  
Chart and/or Geographical MARK Photos (Continued)**

**Leg 2 – TR-1 on COG 128.0T for 0.400 nm.**



**Timed  
Run #1**

**Leg 3 – CP-1 North end McMicken Island**



**47° 14.980'N;  
122° 51.642'W**

**CP-1-McMicken  
Isl. North End**



2021 ICR and Century 21 Navigation Contest  
Chart and/or Geographical MARK Photos (Continued)

Leg 4 – 1st house NW of Taylor Bay

47° 11.171'N;  
122° 47.139'W



1<sup>st</sup> House NW of  
Taylor Bay. Mark  
NW corner of deck.

Leg 5 – CP-2 Johnson Point Light "5"

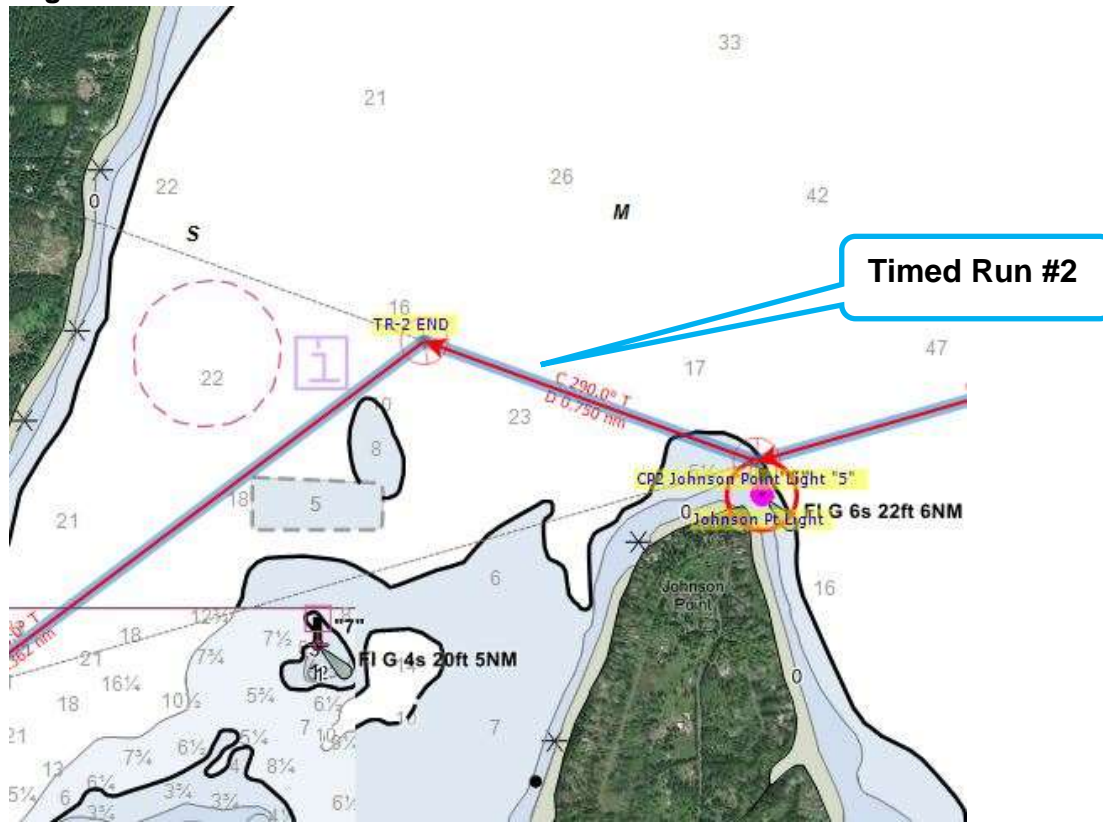
47° 10.704'N;  
122° 48.864'W



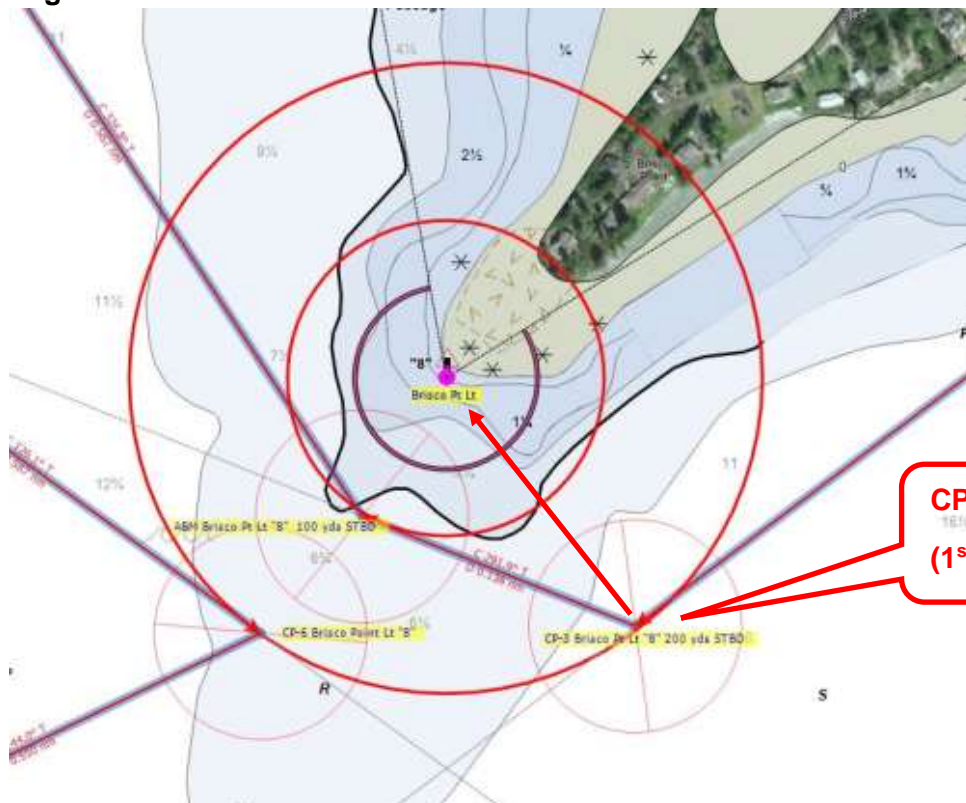
CP-2 Johnson  
Point Light "5"

# 2021 ICR and Century 21 Navigation Contest Chart and/or Geographical MARK Photos (Continued)

Leg 6 – TR-2 at COG 290T for 0.750 nm.



Leg 7 – CP3 - Brisco Pt Lt "8"



47° 09.727'N;  
122° 52.822'W

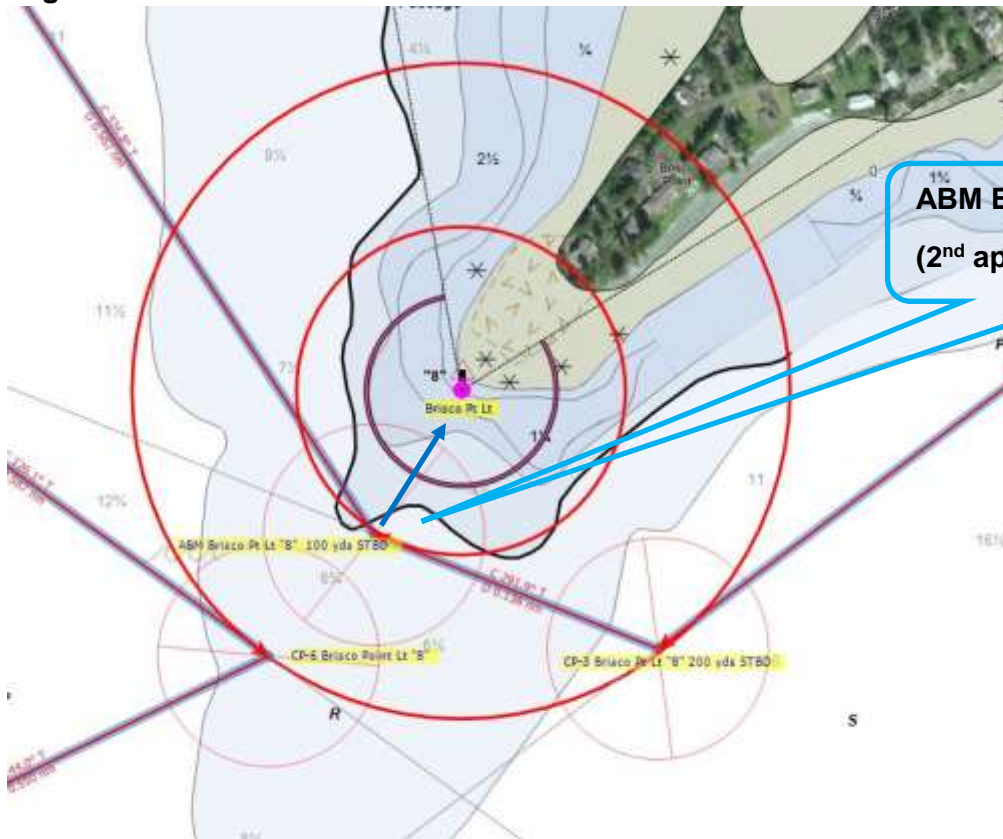
CP-3 – Brisco Pt Lt “8”  
(1<sup>st</sup> approach to Brisco Pt)



2021 ICR and Century 21 Navigation Contest  
Chart and/or Geographical MARK Photos (Continued)

Leg 8 – Abeam Brisco Pt Lt "8"

47° 09.727'N;  
122° 52.822'W



ABM Brisco Pt Lt "8"  
(2<sup>nd</sup> approach to Brisco Pt)

Leg 9 – South end Squaxin Isl.

47° 10.084'N;  
122° 53.544'W



South End Squaxin  
Isl. abeam

2021 ICR and Century 21 Navigation Contest  
Chart and/or Geographical MARK Photos (Continued)

Leg 10 – Squaxin Isl Peninsula

47° 10.538'N;  
122° 53.583'W



Squaxin Isl  
Peninsula  
abeam

Leg 11 – SE corner south-most Peal Passage. Fish Pen

47° 12.033'N;  
122° 54.215'W



SE corner  
south-most  
Peal Psg.  
Fish Pen



**2021 ICR and Century 21 Navigation Contest  
Chart and/or Geographical MARK Photos (Continued)**

**Leg 12 – Harstine Isl Gambrel Roof cabin (at ridgeline)**

47° 12.737'N;  
122° 54.036'W



**Harstine Isl  
Gambrel Roof  
cabin (at  
ridgeline)**

**Leg 13 – Salish Seafoods Fish Pen NE corner**

47° 12.888'N;  
122° 54.767'W



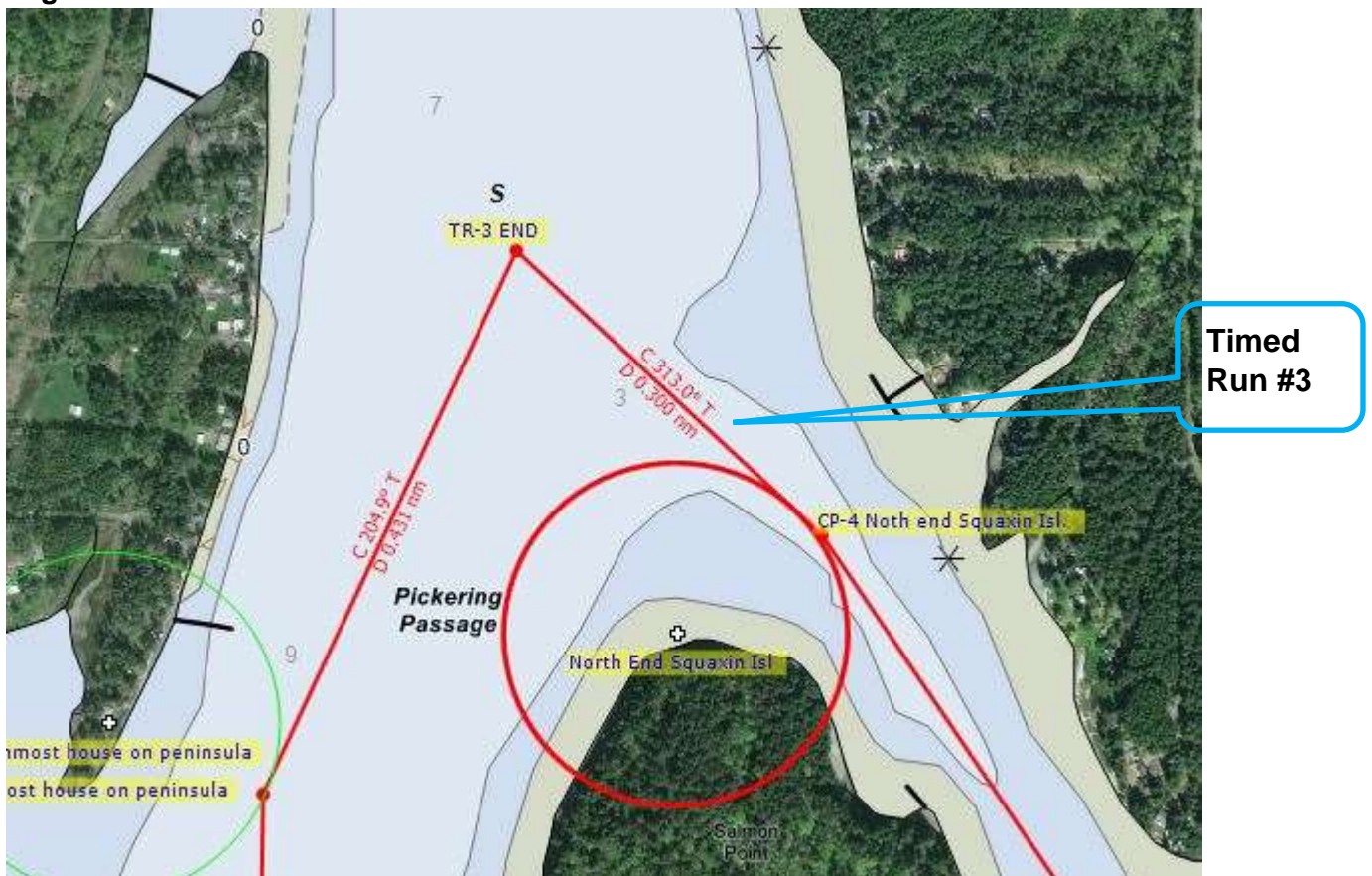
**Salish Seafoods  
Fish Pen NE corner**

2021 ICR and Century 21 Navigation Contest  
Chart and/or Geographical MARK Photos (Continued)

Leg 14 – CP4 - North end Squaxin Isl.



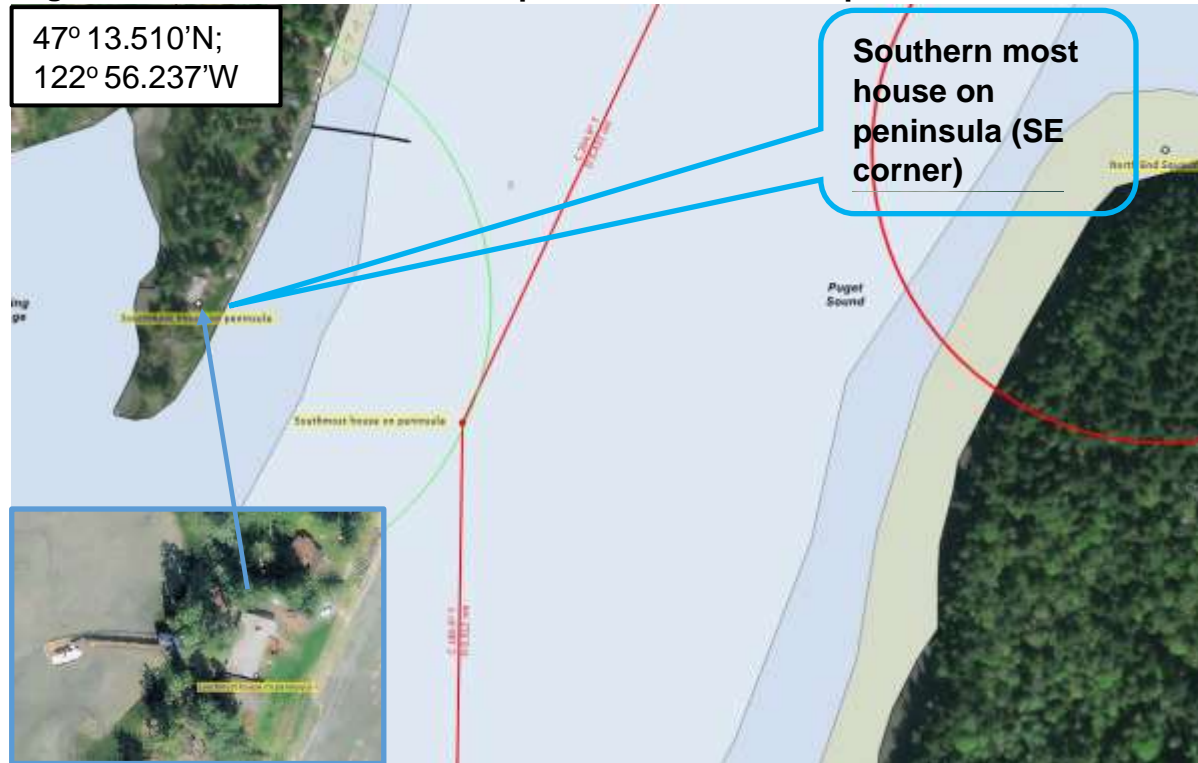
Leg 15 – TR-4 on COG 313.0T for 0.300 nm.



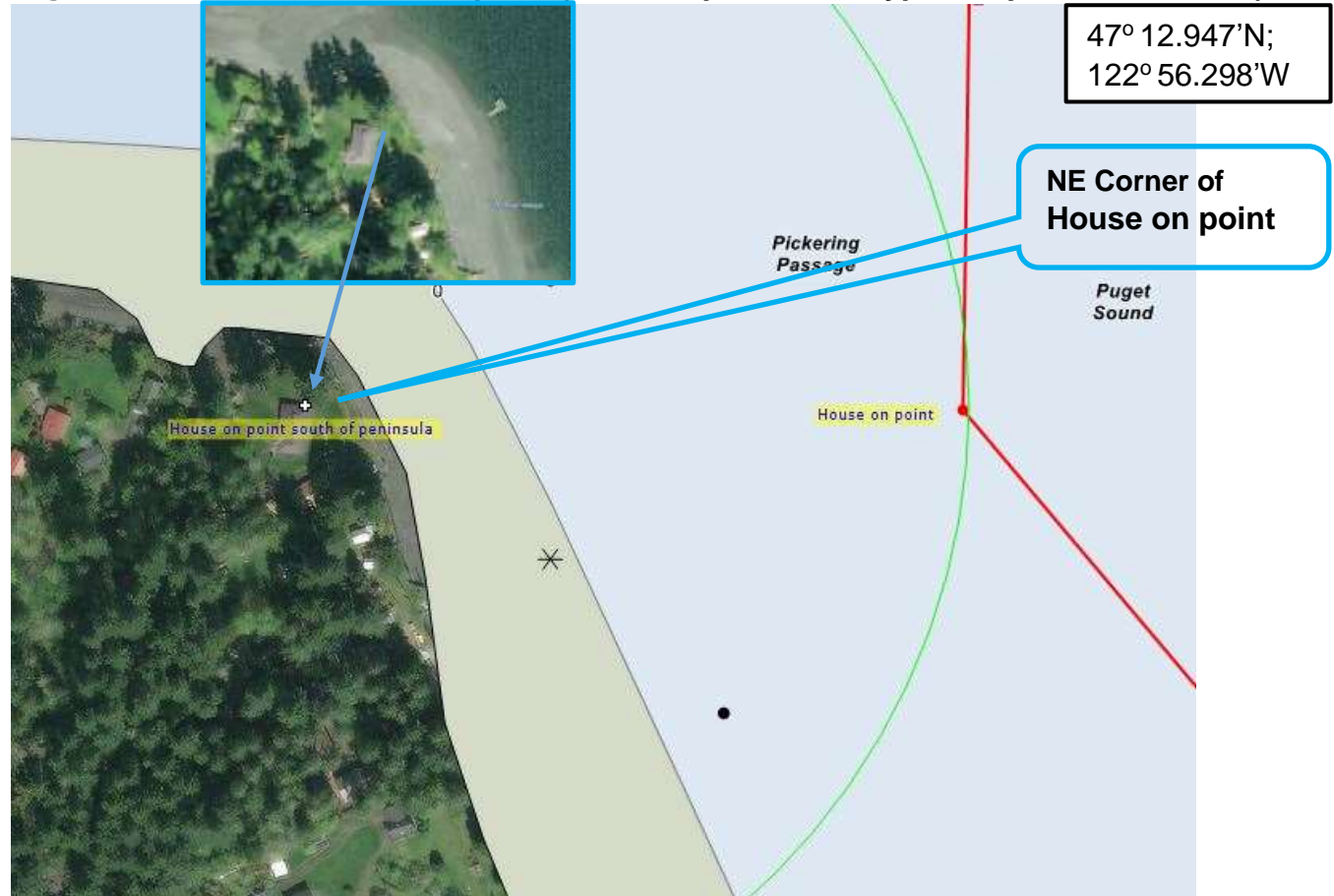


**2021 ICR and Century 21 Navigation Contest**  
**Chart and/or Geographical MARK Photos (Continued)**

**Leg 16 - Southern-most house on peninsula south of Squaxin Isl north end**

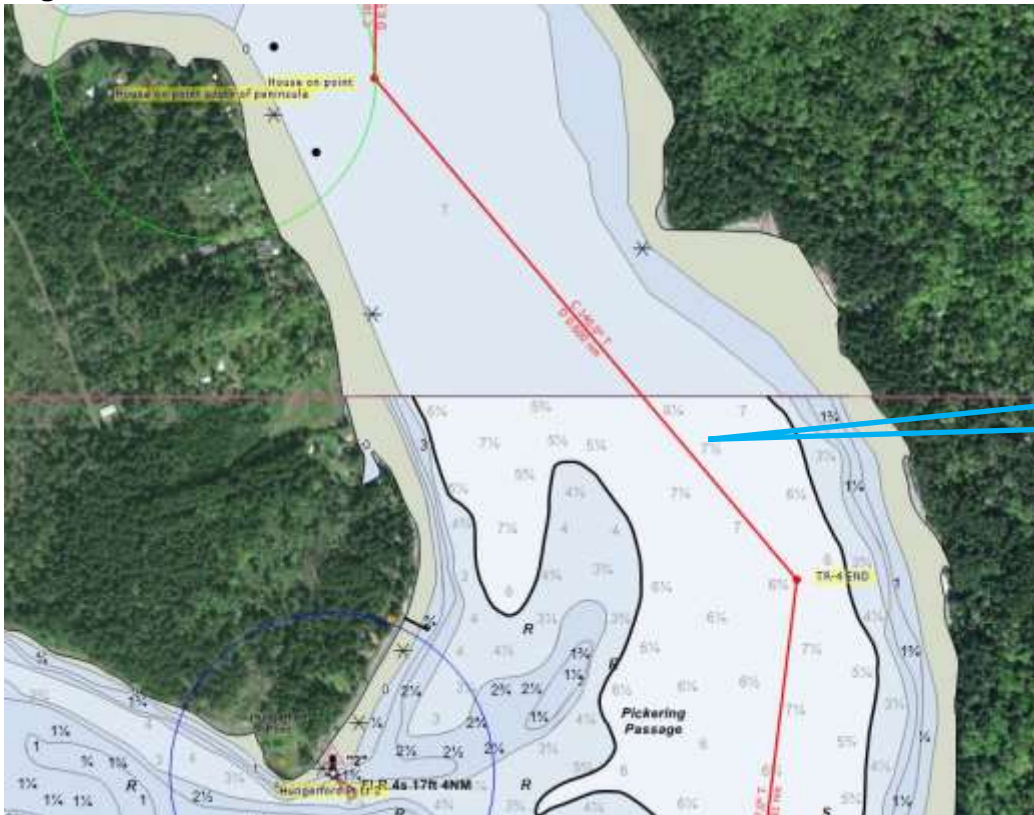


**Leg 17 – NE Corner of House on point (south of previous waypoint - peninsula house)**



**2021 ICR and Century 21 Navigation Contest  
Chart and/or Geographical MARK Photos (Continued)**

**Leg 18 – TR-5 at COG 140.0T for 0.600 nm.**



**Timed  
Run #4**

**Leg 19 – Harstine Isl peninsula north of Hope Isl**



**47° 11.696'N;  
122° 55.442'W**

**Harstine Isl  
peninsula**



2021 ICR and Century 21 Navigation Contest  
Chart and/or Geographical MARK Photos (Continued)

Leg 20 – CP5 - Steamboat Island north end House



Leg 21 – Steamboat Isl Marina Breakwater (at bend in breakwater structure)





2021 ICR and Century 21 Navigation Contest  
Chart and/or Geographical MARK Photos (Continued)

Leg 22 – Hunter Point Lt "1"



47° 10.430'N;  
122° 55.163'W

Hunter Point  
Light "1"

Leg 23 – South end Squaxin Isl.



47° 10.084'N;  
122° 53.544'W

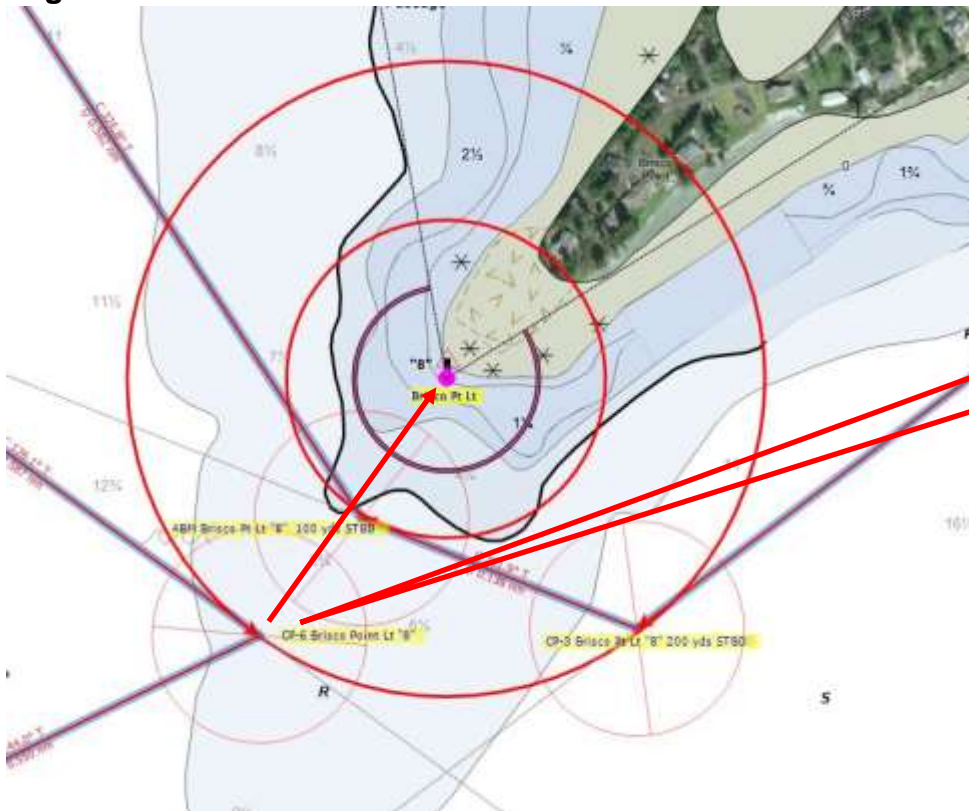
South End  
Squaxin Isl.  
abeam



# 2021 ICR and Century 21 Navigation Contest Chart and/or Geographical MARK Photos (Continued)

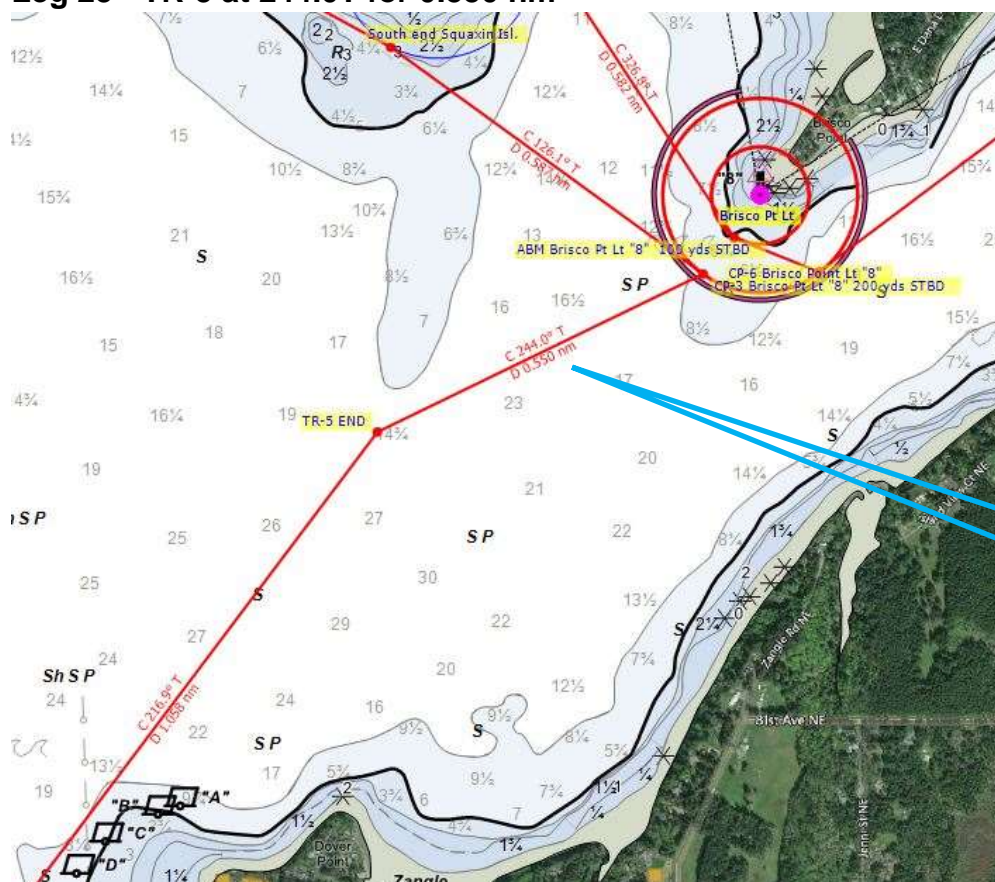
## Leg 24 - CP6 - Brisco Point Lt "8"

47° 09.727'N;  
122° 52.822'W



CP-6 – Brisco  
Point Lt "8"

## Leg 25 - TR-5 at 244.0T for 0.550 nm



Timed  
Run #5

2021 ICR and Century 21 Navigation Contest  
Chart and/or Geographical MARK Photos (Continued)

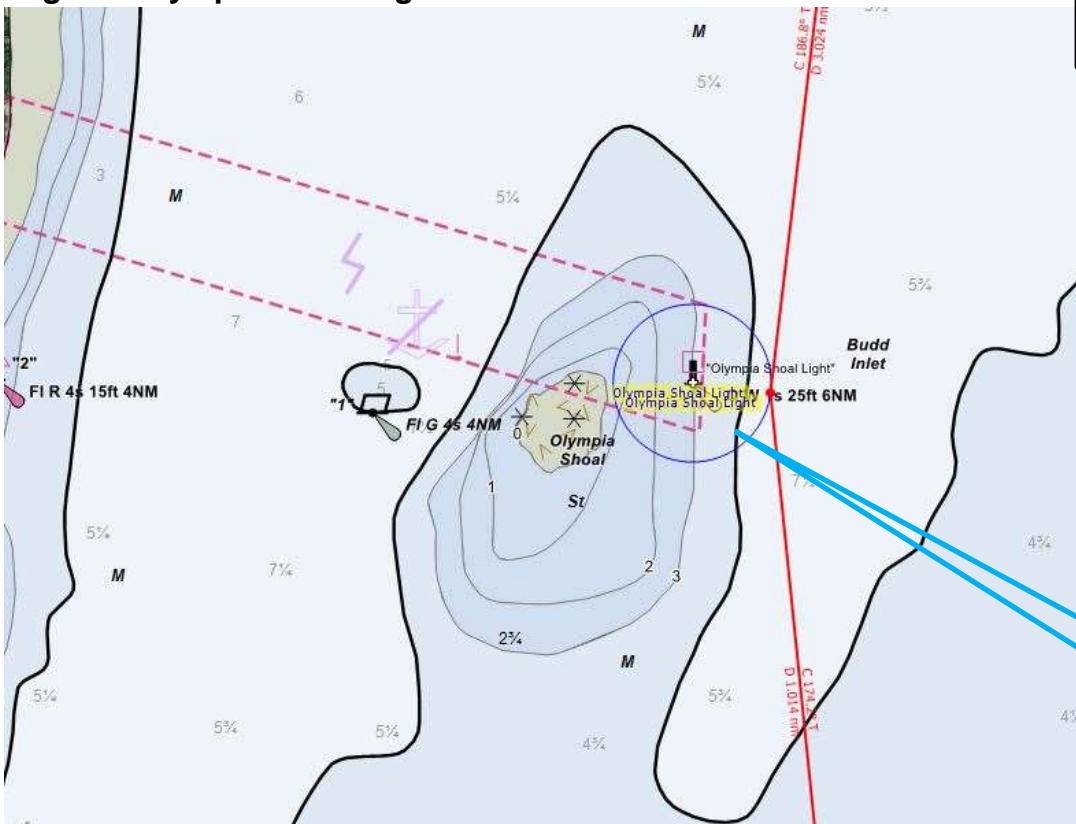
Leg 26 - CP7 - Dofflemyer Pt Lt



47° 08.431'N;  
122° 54.437'W

CP-7 –  
Dofflemyer  
Point  
Lighthouse

Leg 27 - Olympia Shoal Light



47° 05.524'N;  
122° 55.206'W

Olympia  
Shoal Light



**2021 ICR and Century 21 Navigation Contest**  
**Chart and/or Geographical MARK Photos (Continued)**

**Leg 28 - CP8 FINISH - Olympia Channel Lt "5"**



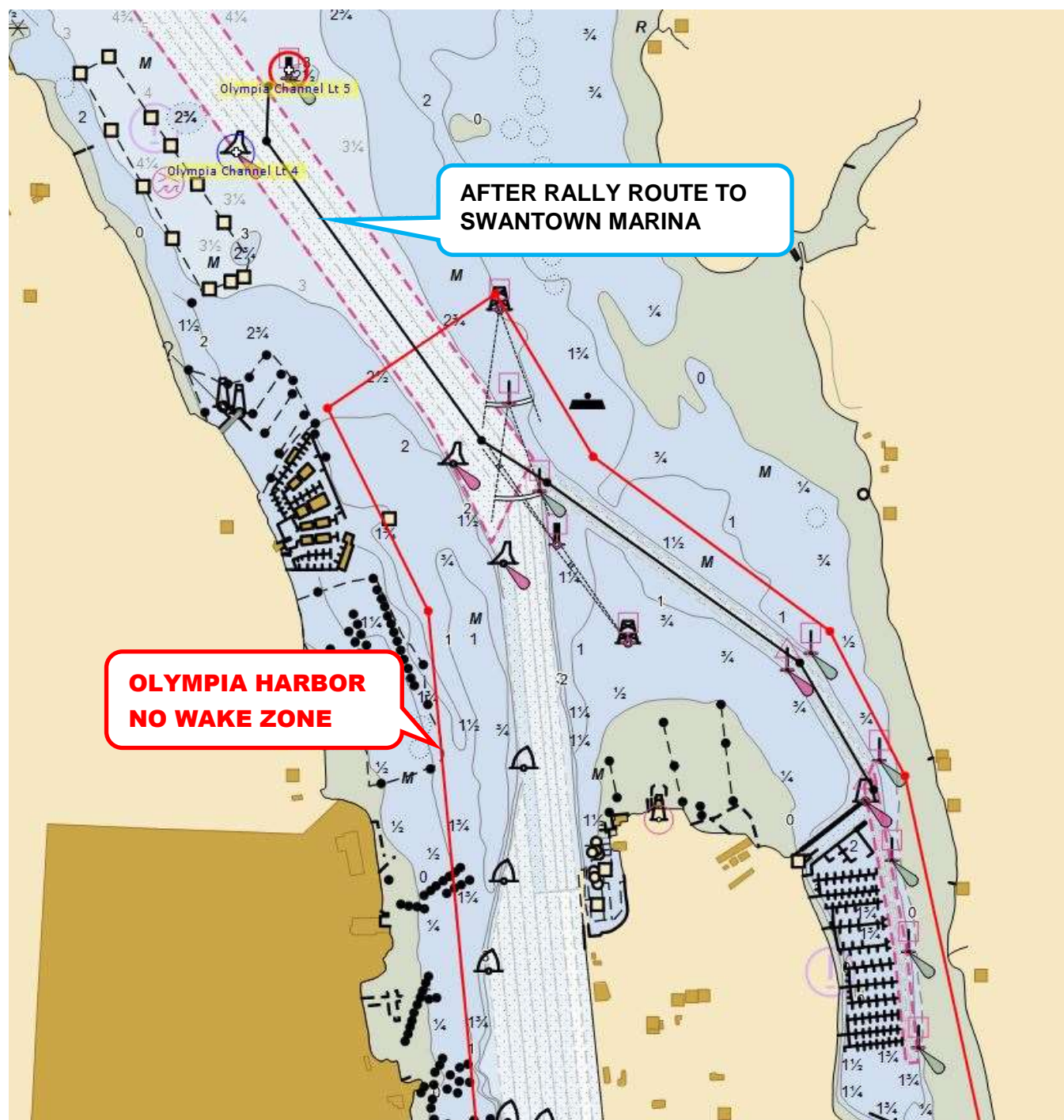
**47° 04.511'N;  
122° 54.948'W**

**CP-8 FINISH –  
Olympia  
Channel Lt “5”**

**CAUTION: From the Finish, PROCEED AT 5.0 KNOTS OR LESS into Olympia Channel.** Continue for approximately 0.6 nm, turning slightly to port, entering the **Olympia East Bay Channel at the “East Bay Junction Light”** (COLOR green, green, red, red horizontal stripes), following the Olympia East Bay Channel markers to the entrance to the Swantown Marina. Upon reaching the marina entrance, hail the marina staff for slip assignment. VHF Channels 16 and/or 65A

**SEE NEXT PAGE FOR  
SWANTOWN ENTRANCE CHARTLET**

## SWANTOWN ENTRANCE CHARTLET



**CAUTION: From the Finish, PROCEED AT 5.0 KNOTS OR LESS into Olympia Channel.** Continue for approximately 0.6 nm, turning slightly to port, entering the Olympia East Bay Channel at the “East Bay Junction Light” (COLOR green, green, red, red horizontal stripes), following the Olympia East Bay Channel markers to the entrance to the Swantown Marina. Upon reaching the marina entrance, hail the marina staff for slip assignment. VHF Channels 16 and/or 65A