

INTERNATIONAL POWER BOAT ASSOCIATION



GULF OF GEORGIA - NORTH PUGET SOUND - SOUTH PUGET SOUND

2021 INTERNATIONAL CRUISER NAVIGATION AND CENTURY 21 CONTESTS

Saturday, September 11, 2021

CONTEST DESCRIPTION FINAL rev 1

Official Mileage:

- Race 1: The official mileage for the ICR, comprised of all eight legs, is **28.87** NM which cannot be exceeded; and will only be counted for IPBA points. The points awarded for the 8 leg ICR will be 2.25 times the standard formula.
- Race 2: The Century 21 contest will be comprised of the last four legs of the ICR with an official distance of 12.00 NM, which cannot be exceeded and will be scored only for NACA points. In addition, the C21 shall determine the Pacific NW Champion and the winner of the "Vagabond" painting trophy. Actual trophies for the ICR and C21 will be presented at the IPBA annual meeting and Awards Banquet whenever that gets scheduled!

Century 21: Century 21 is an international team contest normally between a six boat team from the Gulf of Georgia and a six boat team from Puget Sound. If there is a lack of contestants from GOG, the Century 21 Contest will be limited to a competition between the best contestants from North and South Puget Sound areas determined from the previous year scores.

a) Number of contestants will be determined prior to the start of the contest by the race committee. Each team will contain the same number of eligible contestants but may not exceed six.

b) The scores made by the best six contestants (or number of eligible contestants if less than six) on each team are used in determining the winning team score. Participation does not count toward other local or national awards.

Finish Classes: There will be three finish time brackets (called "finish class" on the log form) as follows:

<u>Finish Class</u>	<u>Flat Water Speed</u>	<u>Finish Time</u>
1	8.00 and under	1410-1420
2	8.01 to 9.00 incl.	1425-1435
3	9.01 and over	1440-1450

Course Description

GENERAL: This contest course will be run on the waters of Southern Puget Sound in the area of Harstine/Squaxin Islands and Budd Inlet.

THE START will be a standing start at 250 yds ~~off to stb~~ the **NE corner of the Tennis Court** near the north end of Harstine Island [47° 17.910'N; 122° 50.895'W]. Proceed at cruise speed.

Leg 1 - Pass the Harstine Island beach cabin ridgeline abeam to ~~port~~stb at 250 yds (cabin on a point on Harstine west of Herron Isl.) [47° 16.244'N; 122° 51.841'W]

Leg 2 - Commence TR-1 on COG 128.0T for 0.400 nm.

Leg 3 - CP1 - North end McMicken Island abeam to stb at 300 yds [47° 14.980'N; 122° 51.642'W]

Leg 4 - 1st house NW of Taylor Bay abeam to port at 300 yd. [47° 11.171'N; 122° 47.139'W]

Leg 5 - CP2 - Johnson Point Light "5" abeam to ~~stb~~port at 150 yds [47° 10.704'N; 122° 48.864'W]

Leg 6 - Commence TR-2 at COG290T for 0.750 nm.

Leg 7 - CP3 - Brisco Pt Lt "8" abeam to stb at 300 yds. [47° 09.727'N; 122° 52.822'W]

Leg 8 - Abeam Brisco Pt Lt "8" 150 yds stb. [47° 09.727'N; 122° 52.822'W]

Leg 9 - South end Squaxin Island abeam to port at 300 yd. [47° 10.084'N; 122° 53.544'W].

Leg 10 – Begin cruise though Peale Passage at **SLOW SPEED (7.0 kts or less)** on a **COG of 007°T** until abeam to port the first Squaxin Island Peninsula [47° 10.538'N; 122° 53.583'W].

Leg 11 – Continue at **SLOW SPEED** on a **COG of 348°T** until abeam to port the SE corner of the southern-most Peal Passage Fish Pen [47° 12.033'N; 122° 54.215'W].

Leg 12 - Continue at **SLOW SPEED** on a **COG of 332°T** until abeam to ~~stb~~ the Harstine Island Gambrel Roof cabin [47° 12.737'N; 122° 54.036'W].

Leg 13 - Continue at **SLOW SPEED** until abeam to port at 50 yds the NE corner the Salish Seafoods Fish Pen [47° 12.888'N; 122° 54.767'W].

Leg 14 - Continue at **SLOW SPEED** until **CP4 - North end Squaxin Island abeam to port at approximately 250 yds. [47° 13.574'N; 122° 55.637'W].**

Leg 15 –**RESUME CRUISE SPEED** and commence TR-3 on COG 313.0T for 0.300 nm.

Leg 16 – At the completion of TR-3, turn to port and continue at **CRUISE SPEED** southerly through Pickering Passage until abeam to ~~stbd~~ at ~~the~~ 250 yds the southern-most house on the peninsula south of Squaxin Island north end [47° 13.510'N; 122° 56.237'W].

Leg 17 – NE corner of House on point [47° 12.947'N; 122° 56.298'W] (south of previous waypoint - peninsula house) abeam to ~~port~~stb at 300 yds. Commence TR-4 at COG 140.0T for 0.600 nm.

Leg 18 – TR-4 End.

Leg 19 - Squaxin Island peninsula [47° 11.696'N; 122° 55.442'W] north of Hope Island abeam to ~~stb~~port at 300 yds. Proceed at **SLOW SPEED**.

Leg 20 - CP5 - Steamboat Island north end House abeam to stb at 250 yds. [47° 11.198'N; 122° 56.345'W]

Leg 21 – Continue at **SLOW SPEED** through Squaxin Passage until abeam to stb at 100 yds the Steamboat Island Marina Breakwater [47° 10.926'N; 122° 56.225'W] (at bend in breakwater structure).

Leg 22 – Continue at **SLOW SPEED** until abeam to stb at 150 yds the Hunter Point Lt "1" [47° 10.430'N; 122° 55.163'W].

Leg 23 - **RESUME CRUISE SPEED** and proceed until abeam to port at 300 yds the south end of Squaxin Island [47° 10.084'N; 122° 53.544'W].

Leg 24 - CP6 - Brisco Point Lt "8" abeam to ~~stb~~ port at 300 yds [47° 09.727'N; 122° 52.822'W]

At CP-6 Proceed at **SLOW SPEED** commencing TR-5 at 244.0T for 0.550 nm.

Leg 25 - TR-5 End. Continue **SLOW SPEED** until reaching CP-7 Dofflemeyer Pt.

Leg 26 - CP7 - Dofflemeyer Pt Lt abeam to port at 300 yds. [47° 08.431'N; 122° 54.437'W]

At CP-7 **RESUME CRUISE SPEED**.

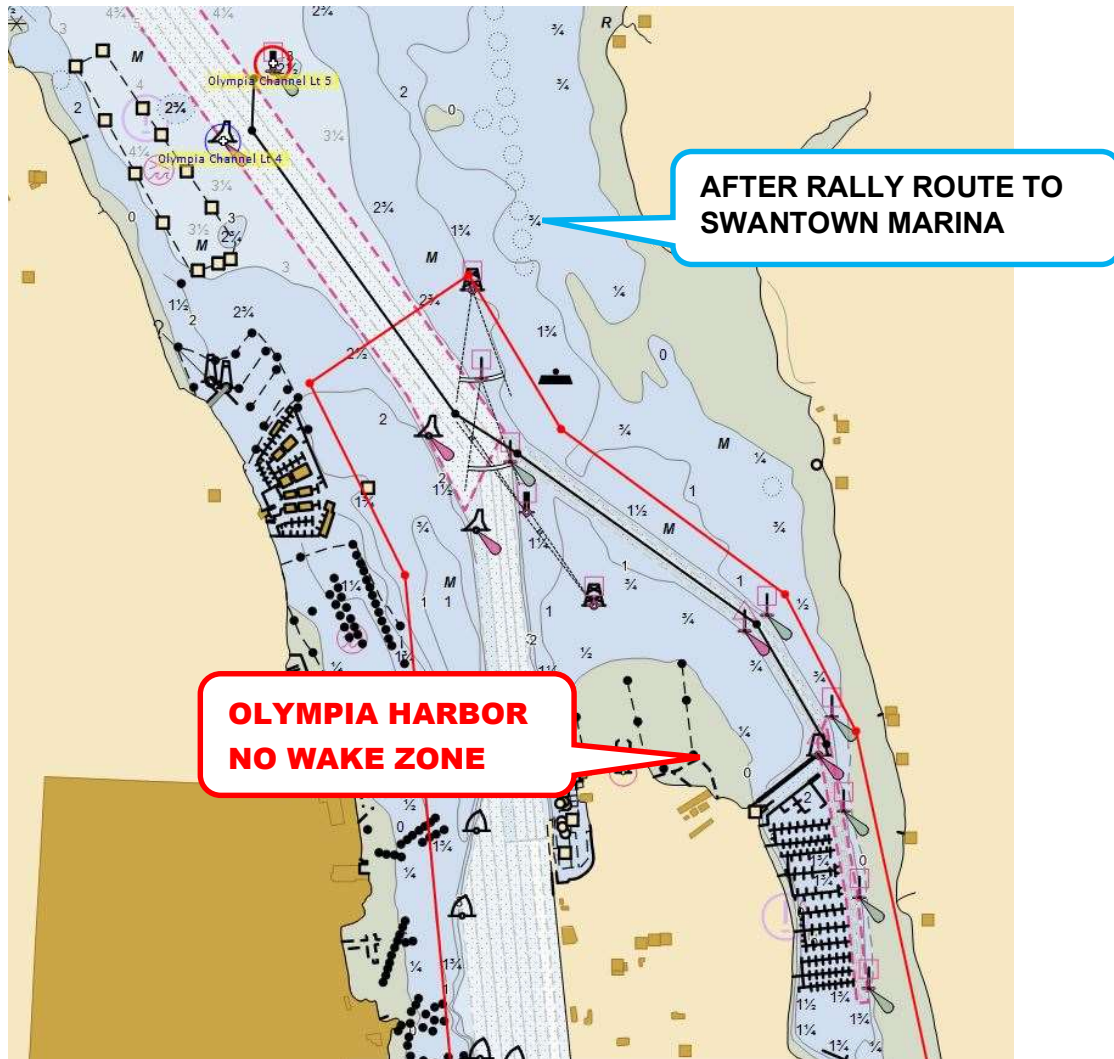
Leg 27 - Olympia Shoal Light [47° 05.524'N; 122° 55.206'W] abeam to stb at 100 yds. **PROCEED AT SLOW SPEED UNTIL REACHING THE FINISH.**

Leg 28 - CP8 FINISH - Olympia Channel Lt "5" abeam to port at 50 yds. [47° 04.511'N; 122° 54.948'W]

CAUTION: From the Finish, PROCEED AT 5.0 KNOTS OR LESS into Olympia

Channel. Continue for approximately 0.6 nm, turning slightly to port, entering the **Olympia East Bay Channel at the "East Bay Junction Light"** (COLOR green, green, red, red horizontal stripes), following the Olympia East Bay Channel markers to the entrance to the Swantown Marina. Upon reaching the marina entrance, hail the marina staff for slip assignment. VHF Channels 16 and/or 65A

SWANTOWN ENTRANCE CHARTLET



CAUTION: From the Finish, PROCEED AT 5.0 KNOTS OR LESS into Olympia Channel. Continue for approximately 0.6 nm, turning slightly to port, entering the **Olympia East Bay Channel** at the “**East Bay Junction Light**” (COLOR green, green, red, red horizontal stripes), following the Olympia East Bay Channel markers to the entrance to the Swantown Marina. Upon reaching the marina entrance, hail the marina staff for slip assignment. VHF Channels 16 and/or 65A

2021 ICR and Century 21 Navigation Contest

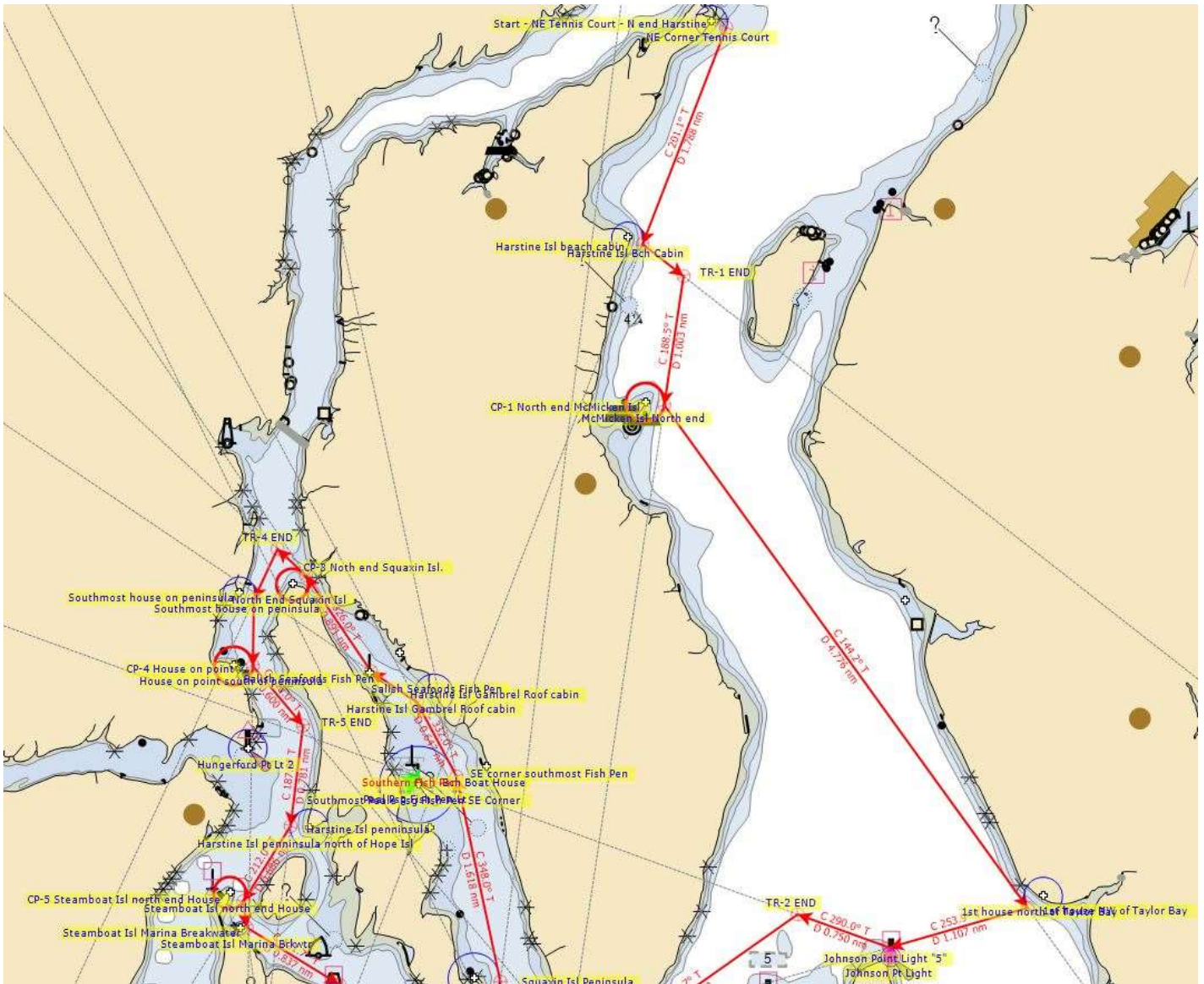
Individual Leg Waypoint Information

Leg	TR #	Name	Bearing (True)	Dist.	Total Distance	Latitude	Longitude
		Start - NE Tennis Court - N end Harstine				47° 17.87'W	122° 50.73'E
1		Harstine Island beach cabin	201.1	1.785	1.785	47° 16.20'W	122° 51.67'E
2	1	TR-1 END	128.0	0.400	2.185	47° 15.95'W	122° 51.21'E
3		CP-1 North end McMicken Isl	188.6	1.007	3.192	47° 14.96'W	122° 51.43'E
4		1st house NW of Taylor Bay	144.2	4.776	7.968	47° 11.08'W	122° 47.32'E
5		CP2 Johnson Point Light 5'''	253.9	1.116	9.083	47° 10.78'W	122° 48.89'E
6	2	TR-2 END	290.0	0.750	9.833	47° 11.03'W	122° 49.93'E
7		CP-3 Brisco Pt Lt 8" 200 yds STBD"	232.8	2.354	12.187	47° 9.61'W	122° 52.69'E
8		ABM Brisco Pt Lt 8" 100 yds STBD"	292.4	0.128	12.315	47° 9.66'W	122° 52.86'E
9		South end Squaxin Isl.	326.2	0.610	12.925	47° 10.17'W	122° 53.36'E
10		Squaxin Island Peninsula	7.0	0.352	13.277	47° 10.52'W	122° 53.30'E
11		SE corner south-most Fish Pen	348.0	1.615	14.892	47° 12.10'W	122° 53.79'E
12		Harstine Island Gambrel Roof cabin	332.0	0.644	15.536	47° 12.66'W	122° 54.24'E
13		Salish Seafoods Fish Pen	305.4	0.422	15.958	47° 12.91'W	122° 54.75'E
14		CP-4 North end Squaxin Isl.	325.7	0.892	16.850	47° 13.65'W	122° 55.49'E
15	3	TR-3 END	313.0	0.300	17.150	47° 13.85'W	122° 55.81'E
16		South-most house on peninsula	204.6	0.429	17.579	47° 13.46'W	122° 56.07'E
17		House on point	180.5	0.513	18.092	47° 12.95'W	122° 56.08'E
18	4	TR-4 END	140.0	0.600	18.693	47° 12.49'W	122° 55.51'E
19		Harstine Island peninsula	187.3	0.779	19.471	47° 11.71'W	122° 55.66'E
20		CP-5 Steamboat Island north end House	212.0	0.685	20.157	47° 11.13'W	122° 56.19'E
21		Steamboat Island Marina Breakwater	172.7	0.203	20.360	47° 10.93'W	122° 56.15'E
22		Hunter Point Lt 1'''	121.7	0.837	21.196	47° 10.49'W	122° 55.11'E
23		South end Squaxin Isl.	118.6	1.129	22.325	47° 9.95'W	122° 53.65'E
24		CP-6 Brisco Point Lt 8'''	126.1	0.587	22.912	47° 9.61'W	122° 52.95'E
25	5	TR-5 END	244.0	0.550	23.463	47° 9.37'W	122° 53.68'E
26		CP-7 Dofflemyer Pt Lt	216.9	1.058	24.520	47° 8.52'W	122° 54.61'E
27		Olympia Shoal Light	186.8	3.024	27.544	47° 5.52'W	122° 55.13'E
28		FINISH - Olympia Channel Lt 5'''	174.2	1.014	28.558	47° 4.51'W	122° 54.98'E

2021 ICR and Century 21 Navigation Contest

Chartlet

NORTH



SOUTH

