

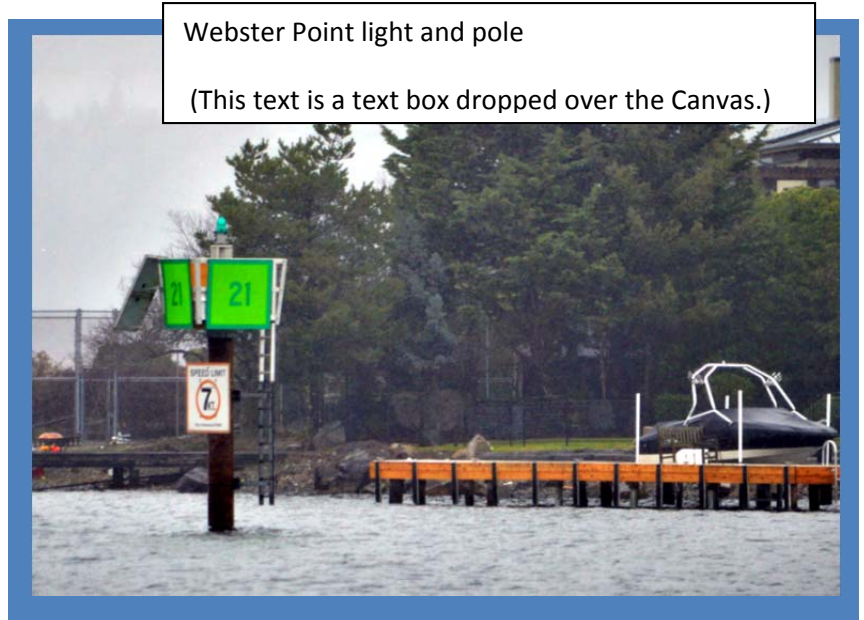
Template for Navigation Contest Pictures and Directions:

Very often Navigation Contests may have data – other than the course description, in the form of pictures and text. Please use this template as a guide to producing documents, that are easily transported over the internet through websites, e-mail or cell phones. I'm going to create a bunch of text to show how this works.

Modern phones can produce extremely high resolution photos that challenge bandwidth constraints. Obviously, if a photographer has spent the time to get out on the water and take the picture – it's probably best to use the high resolution settings – knowing that the photo can be reformatted before publication.

SCREEN PHOTOS

Webster Pt. is a screen capture using the snipping tool found as part of the Microsoft utility programs that come with your computer. Apple operating systems use Control-Shift-Command-4 – Both drop the image into the Clipboard.



Webster Point light and pole

(This text is a text box dropped over the Canvas.)

Screen captures save the image at a near screen resolution – much more useful when using actual screens. The disadvantage is you can't zoom in with any better resolution than what's there! So – it's a good idea to edit the photo before hand – in the case of Webster Pt. I brightened it and cropped the photo eliminating parts of the photo that was of no use. I edit the program first – then a screen capture. (One would also have to ask whether to include a Webster Pt photo – it's on the chart..)

I'm using MS WORD here. There are limited editing tools in MS WORD but I can brighten/crop the photo and place a shape over the top. Just remember – cropping a photo doesn't actually save space in WORD – the whole photo is still there.... The Blue background is MS WORD 'Drawing Canvas' with the picture placed inside. I filled the Canvas so the text would wrap when I select Text Wrap Tight when the Canvas is selected.

WOLF BAY DOCK on the right doesn't use a 'Canvas' but just pasted where I thought it should go- then formatted to tight word wrap and moved to the right... With a photo you can overshoot the text limits.



Wolf Bay Dock; NW View

Template for Navigation Contest Pictures and Directions:

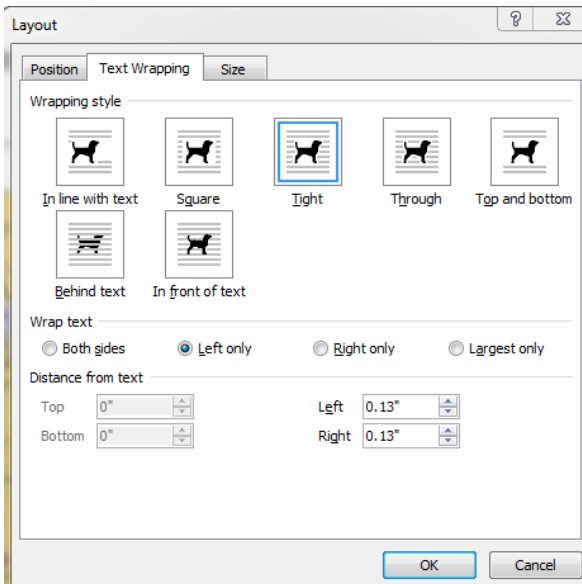
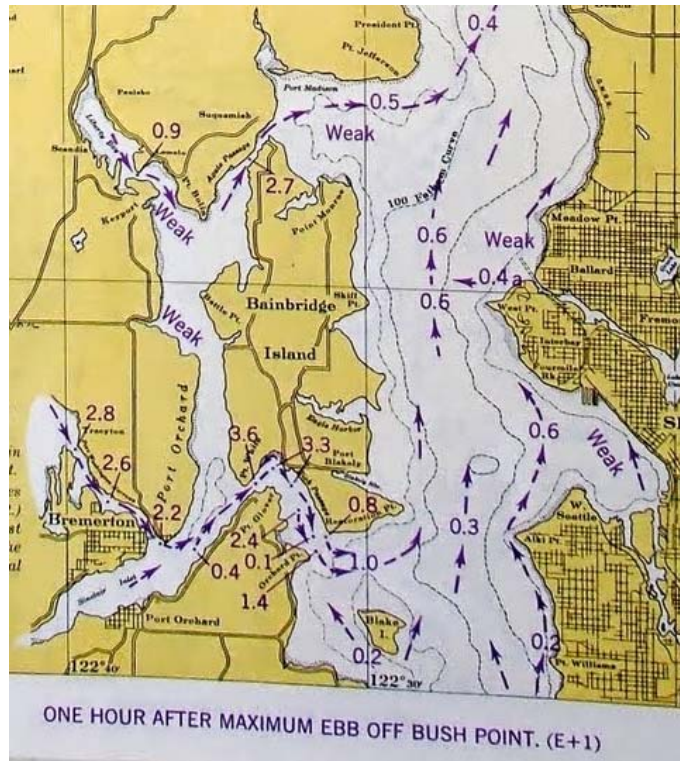
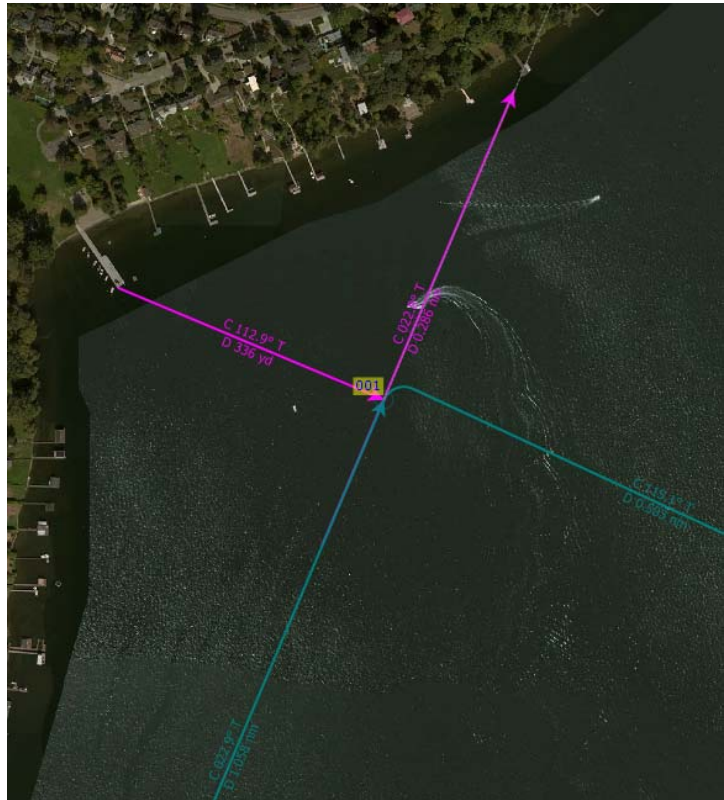
SCREEN CHARTS

A screen capture of Wolf Bay Dock Bing Overlay on Coastal Explorer, our first waypoint from FOS, is shown with a couple RBL's to indicate sight lines. Some boats will have this running from the internet while others will not. In past contests, I've done screen captures such as this for my own info. Notice I changed the color of the course to show on the various charts along with checking the heading and extension info.

I prefer to drop the pictures right justified, so they can run nearer the edge of the page than the text and is not in the way of a 3 hole punch.

Also shown is an example of a Current Chart for the Puget Sound Basin that may be of use for other salt water contests. These are .JPG files and are quite large so it's best to enlarge in a photo program and do a screen capture of it – rather than show the whole chart. These Current Charts are available in their original format on our IPBA Website – to allow enlargements.

For photos/graphics, I suggest reformatting the photos thus:



Template for Navigation Contest Pictures and Directions:

This WORD Document – is still a hefty 5+MB and can be further reduced printing to a .PDF document where the size drops to 600Kb... Obviously – submitting a .PDF is preferred...

Coastal Files

Our website software – Wild Apricot, doesn't support uploading files not recognized by virus protection software.(I believe this is the case...) IF you'd like to share a ROUTE, Waypoints and other data – it's best to EXPORT these objects out of Coastal Explorer as .GPX files. GPX stands for GPS Exchange Format – these files can be transferred and read by a variety of nav software. Also – our website software can scan it for possible problems..

These are not the only way to do stuff... it may be you can come up with something better that doesn't involve... steps! Please let this old 'EDLIN' guy know....

So get a process going that makes this all easy for everyone – keep documents tidy and portable. If you have any questions feel free to ask your local MS WORD and Photo Guru!

See you all out there in the boats!

Clint Chapin – IPBA Admin guy